

Protein iDentification

For Life Science Research

- > **Recombinant** proteins
- > **Labelling** kits and reagents
- > **Protein analysis** products
- > **Assay** kits



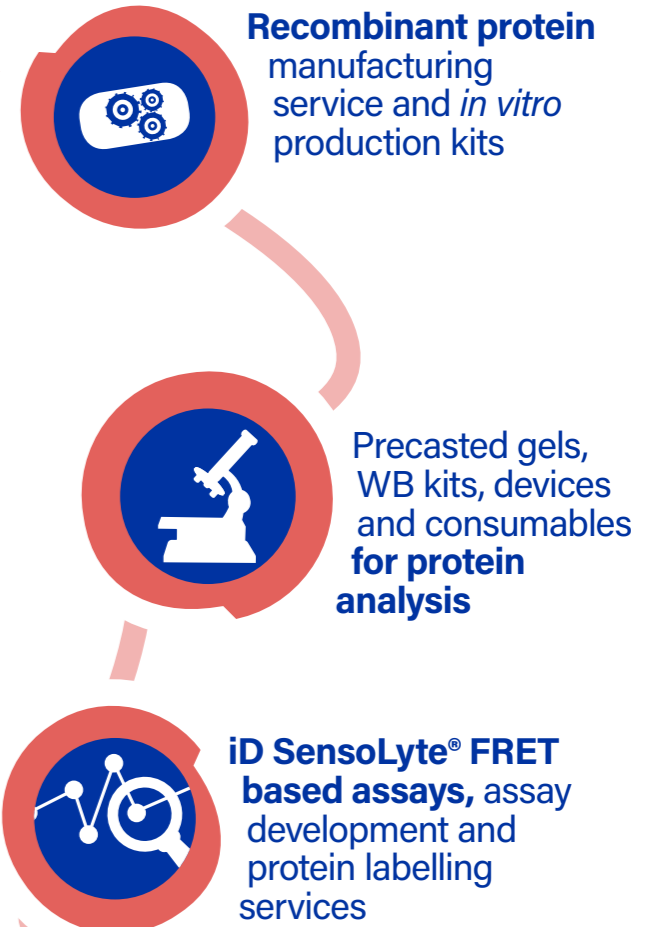


COMPREHENSIVE OFFER

Our extensive experience in the synthesis of dyes and peptide-based substrates for assay development lends us a unique understanding of your detection needs and challenges.

CUSTOM & CATALOGUE INNOVATION

We are actively committed to developing new products and improving our existing products and services to help solving your detection issues and saving you time.



Protein iDentification

Recombinant proteins

Fluorescent dyes and reagents

Protein analysis

- p5 Recombinant proteins
- p5 *Custom recombinant protein production*
- p6 *Catalogue recombinant proteins*
- p7 Dyes and reagents
- p7 *Labelling dyes, quenchers and kits*
- p10 *Fluorescent proteins and reagents*
- p13 *Physiological and neurological indicators*
- p16 *DNA binding dyes*
- p17 Protein analysis
- p17 *Electrophoresis products*
- p19 *Western blotting*
- p21 *iD SensoLyte® assay kits*

Annexes

- p29 *How to order / Related products*
- p30 *Trademarks / License statements*

Protein iDentification

Recombinant proteins

Fluorescent dyes and reagents

Protein analysis

Recombinant proteins

DID YOU KNOW

The Eurogentec Biologics division performs the production of GMP proteins for pharmaceutical use and commercialisation.
<http://biologics.eurogentec.com>

ALSO AVAILABLE

- > Protein Labelling with Fluorescent dyes, and quenchers
- > Protein-peptide conjugation (KLH, BSA, OVA)

➤ CUSTOM RECOMBINANT PROTEIN PRODUCTION

Eurogentec produces research grade recombinant proteins according to the customer's specifications. The protein production can be performed in various hosts such as *Pichia pastoris*, baculovirus, *Escherichia coli*, HEK or CHO cells. While larger projects can be performed, the typical protein amount produced is 2 to 10 mg and a classical application is the use of the recombinant protein as antigen for antibody generation.

The protein can be delivered with a purity level from 85% up to more than 90%. Additionally, we can label the protein with tags and dyes.

Each project begins with a discussion prior to gene optimisation, cloning and expression. A pilot phase is always performed to determine the gene expression level. Only fulfilled steps are invoiced.

To start discussing your project, please contact us at proteomics.services@eurogentec.com

GeneFrontier



PUREfrefx™

Cell-free protein production systems aim at producing small amounts of proteins *in vitro* in only 2 to 4 hours. They correspond to a reconstituted *E.coli* transcription/translation machinery which only requires the DNA sequence encoding the target protein in a T7-based system. It works optimally for producing bacterial proteins, and favours the use of DNA sequences optimised for *E.coli* codon usage.

Our PUREfrefx™ kit is designed to perform 10 reactions of 25 µL each.



ORDERING INFORMATION

Description	Amount	Catalogue#
PUREfrefx™	250 µL	PS-PF001-025

PUREfrefx™ is developed for *in vitro* research use only. PUREfrefx™ should not be used for the therapy, diagnostic or administration to animals including human and should not be used as food or cosmetics etc. For information concerning commercial use of PUREfrefx™, please contact GeneFrontier: contactus@genefrontier.com. PUREfrefx™ is a trademark of GeneFrontier Corp.

CATALOGUE RECOMBINANT PROTEINS

Our catalogue recombinant proteins cover the most common proteins mainly related to neurosciences and cancer research. Our portfolio includes Myelin Oligodendrocyte Glycoprotein (MOG)

(Multiple sclerosis), Tau (Alzheimer's disease), Synuclein and DJ-1 (Parkinson's disease) and MMP's (tissue remodelling). ■



ORDERING INFORMATION

Product	Quantity	Size	Product	Quantity	Size
Parkinson's			Multiple sclerosis		
DJ-1			Myelin Oligodendrocyte Glycoprotein		
AS-72219-10	DJ-1 (PARK7), Recombinant human	10 µg	AS-55150-100	Recombinant mouse MOG (1-125)	100 µg
AS-72219-100	DJ-1 (PARK7), Recombinant human	100 µg	AS-55150-500	Recombinant mouse MOG (1-125)	500 µg
AS-72219-500	DJ-1 (PARK7), Recombinant human	500 µg	AS-55150-1000	Recombinant mouse MOG (1-125)	1000 µg
AS-72220-10	DJ-1 (PARK7), Recombinant human, GST Tagged	10 µg	AS-55152-100	Recombinant rat MOG (1-125)	100 µg
AS-72220-100	DJ-1 (PARK7), Recombinant human, GST Tagged	100 µg	AS-55152-500	Recombinant rat MOG (1-125)	500 µg
Synuclein			AS-55152-1000	Recombinant rat MOG (1-125)	1000 µg
AS-55555-100	*EndoClear™ Recombinant human alpha-Synuclein,	100 µg	AS-55158-100	Recombinant human MOG (1-125)	100 µg
AS-55555-500	*EndoClear™ Recombinant human alpha-Synuclein	500 µg	AS-55158-500	Recombinant human MOG (1-125)	500 µg
AS-55555-1000	*EndoClear™ Recombinant human alpha-Synuclein	1 mg	AS-55158-1000	Recombinant human MOG (1-125)	1000 µg
AS-56081-100	*EndoClear™ Plus Human Recombinant human alpha-Synuclein	100 µg	Cardiovascular		
AS-56081-500	*EndoClear™ Plus Human Recombinant human alpha-Synuclein	500 µg	Renin		
AS-55581	Recombinant human alpha-synuclein (1-140), biotin labelled	200 µg	AS-72041	Human Renin, Recombinant	5 µg
AS-55457	Recombinant human alpha-synuclein (1-140), HiLyteFluor™488 labelled	200 µg	AS-72141	Rat Renin, Recombinant	20 µg
AS-55458-100	Recombinant human beta-Synuclein (1-134)	0.1 mg	AS-72174	Mouse Prorenin, Recombinant	20 µg
AS-55458-500	Recombinant human beta-Synuclein (1-134)	0.5 mg	Epigenetics		
AS-55458-1000	Recombinant human beta-Synuclein (1-134)	1 mg	Sirtuin		
Cancer & Apoptosis			AS-72187	Human Sirtuin 2, Recombinant	10 µg
Matrix Metalloproteinases			AS-72212	Human Sirtuin 1, Recombinant	10 µg
AS-72004	Human MMP-1	100 µL	Viral & bacterial Proteases		
AS-72005	Human MMP-2	100 µL	Virus		
AS-72006	Human MMP-3	100 µL	AS-61017-5	HCV NS3/4A protease genotype 1b, recombinant	5 µg
AS-72007	Human MMP-7	100 µL	AS-61017-10	HCV NS3/4A protease genotype 1b, recombinant	10 µg
AS-72008	Human MMP-8	100 µL	AS-72028-5	HIV-1 Protease, recombinant	5 µg
AS-72067	Human MMP-10	100 µL	AS-72081-5	West Nile Virus NS3 Protease, recombinant	5 µg
AS-72011	Human MMP-13	100 µL	AS-72081-100	West Nile Virus NS3 Protease, recombinant	100 µg
AS-72068	Human MMP-14	100 µL	Bacteria		
AS-55575-1	Human MMP-1 (Recombinant, Catalytic Domain)	1 µg	AS-72229	Sortase A protease, Recombinant	10 µg
AS-55575-10	Human MMP-1 (Recombinant, Catalytic Domain)	10 µg	Also available: Cell Extracts		
AS-55576-1	Human MMP-9 (Recombinant, Catalytic Domain)	1 µg	AS-29515	3T3 Whole Cell Lysate	200 µg
AS-55576-10	Human MMP-9 (Recombinant, Catalytic Domain)	10 µg	AS-29517	Hela Whole Cell Lysate	200 µg
AS-55576-50	Human MMP-9 (Recombinant, Catalytic Domain)	50 µg	AS-29519	MCF-7 Whole Cell Lysate	200 µg
AS-55884-1	Mouse MMP-9 (Recombinant, Catalytic Domain)	1 µg	AS-29520	HEK293 Whole Cell Lysate	200 µg
AS-55884-10	Mouse MMP-9 (Recombinant, Catalytic Domain)	10 µg	AS-55362	Raji Whole Cell Lysate	200 µg
AS-55884-50	Mouse MMP-9 (Recombinant, Catalytic Domain)	50 µg	Alzheimer's		
AS-55525-1	Human MMP-12 (Recombinant, Catalytic Domain)	1 µg	Tau		
AS-55525-10	Human MMP-12 (Recombinant, Catalytic Domain)	10 µg	AS-55556-100	Tau (Tau-441), human recombinant	100 µg
AS-55525-50	Human MMP-12 (Recombinant, Catalytic Domain)	50 µg	AS-55556-50	Tau (Tau-441), human recombinant	50 µg
			AS-55557-100	Tau (Tau-441), human recombinant, GST tagged	100 µg
			AS-55557-50	Tau (Tau-441), human recombinant, GST tagged	50 µg

GOOD TO KNOW

* EndoClear™ and EndoClear™ Plus are new grades of recombinants proteins containing low endotoxin level. Most commercial recombinant proteins produced in bacteria contain inherent/residual endotoxin concentrations that create a variety of problems for researchers using cell culture. Working with low level of endotoxin solution minimises potential negative effects. We provide two levels of Low Endotoxin alpha Synuclein protein:
 · EndoClear™ Alpha Synuclein : 0.1 EU/ug protein
 · EndoClear™ Plus Alpha Synuclein : 0.001 EU/ug protein

Dyes & labelling reagents

Fluorescent reagents are used extensively to trace the presence of biomolecules in cells and other biological systems. The great advancement of fluorescence reagents has promoted a host of more complex fluorescence technologies such as fluorescence resonance energy transfer (FRET), time-resolved fluorescence (TRF), fluorescence polarization (FP), fluorescence recovery after photobleaching (FRAP), fluorescence activated cell sorting (FACS) and fluorescence correlation spectroscopy (FCS). Excitation and emission wavelength, fluorescence quantum yield, fluorescence lifetime, size, photostability and biological functionality are important factors to be considered in selection of a desired fluorescent probe for your applications. ■

LABELLING COMPONENTS AND KITS

We are pleased to support the scientific community by providing a broad range of premium stand-alone reactive dyes, fluorophore-quencher pairs and AnaTag™ labelling kits for varied labelling and detection applications. ■



Dyes

Dyes are widely used to modify amino acids, peptides, proteins (in particular, antibodies), oligonucleotides, nucleic acids, carbohydrates etc, and to detect cellular organelles and molecules.

Our full spectrum of dyes covers all detection channels.

CyLyte Dyes are dyes from AnaSpec which are cost effective alternative to the popular Cyanine dyes. HiLyte™ Fluor dyes are not affected by pH, making them an ideal choice when your application requires fluorescent detection at high or low pH (4-11).

ORDERING INFORMATION

PRODUCT NAME	abs/em (nm)	CAT#						
		Hydrazide	Succinimidyl ester (SE)	Acid	Amine	C2 Maleimide	Hydroxylamine	NHS ester
HiLyte™ Fluor 488	497/525	AS-81163	AS-81161-1	AS-81160	AS-81162 ¹	AS-81164	AS-64348 ²	/
HiLyte™ Fluor 532	545/565	AS-89343	AS-89341	AS-89340	AS-89344	AS-89342	/	/
HiLyte™ Fluor 555	550/566	/	AS-81251	AS-81250	AS-81252	AS-81254-	/	/
HiLyte™ Fluor 647	650/675	/	AS-81256	AS-81255	AS-81257	AS-81259	/	/
HiLyte™ Fluor 750	753/778	AS-81268	AS-81266	/	AS-81267	AS-81269	/	/
CyLyte Fluor 3	550/564	/	/	AS-89353	/	/	/	AS-89356
CyLyte Fluor 5	648/663	/	/	AS-89354	/	/	/	AS-89357
CyLyte Fluor 7	750/773	/	/	AS-89355	/	/	/	AS-89358

¹ TFA salt

² HCl salt *single isomer*

* Please visit www.eurogentec.com to be aware of product size availability

FRET

Our full spectrum of dyes (see p7 above) can be paired with our QXL® quenchers for use in FRET. FRET (fluorescence resonance energy transfer) occurs between two molecules (proteins, peptides, DNA...) tagged with a donor and an acceptor respectively when placed within 10-100

Å of each other.

It results in the quenching of the donor fluorescence by the acceptor after donor excitation. Spatial separation of the donor and acceptor results in the recovery of the donor fluorescence.

BENEFITS

- > Full spectrum covering all detection channels
- > Several reactive (amine, thiol, carbonyl) forms available

APPLICATIONS

- > 2-photon/confocal microscopy
- > Flow cytometry
- > *In-vivo* imaging
- > HTS detection of proteases
- > Protein-peptide interaction

FRET			
Dye*	Dye Ex/ Em (nm)	Quencher	Max Quencher Absorbance (nm)
Mca	325/393	Dnp	350
EDANS	335/493	DABCYL, DABCYL Plus™ QXL 490	472, 485, 485
FAM	492/518	QXL 520**	508-530
FITC	494/519	QXL 520**	508-530
HiLyte™ Fluor 488	502/527	QXL 520**	508-530
CyLyte Fluor 3	554/568	QXL 570	577
HiLyte™ Fluor 532	545/565	QXL 570	577
HiLyte™ Fluor 555	552/569	QXL 570	577
TAMRA	547/574	QXL 570	577
ROX	568/591	QXL 610	628
HiLyte™ Fluor 647	649/674	QXL 670	668
CyLyte Fluor 5	649/666	QXL 670	668
CyLyte Fluor 7	750/773	IR-QXL	772

*All dyes listed in this table can be used as stand alone fluorescent tag **Available only for custom service

TR-FRET

TR-FRET is a combination of Time Resolved Fluorescence (TRF) and Forster's Resonance Energy Transfer (FRET) technologies. This method offers the advantages of reducing background noise and providing a higher sensitivity and reliability than the FRET method. In TR-FRET instead of a fluorescent dye, the donor molecule is a

Lanthanide metal such as Terbium (Tb) and Europium (Eu). Their fluorescence is long-lived and is characterised by a large Stokes shift providing a high signal-to-noise ratio due to minimal crosstalk between excitation and emission wavelengths. ■

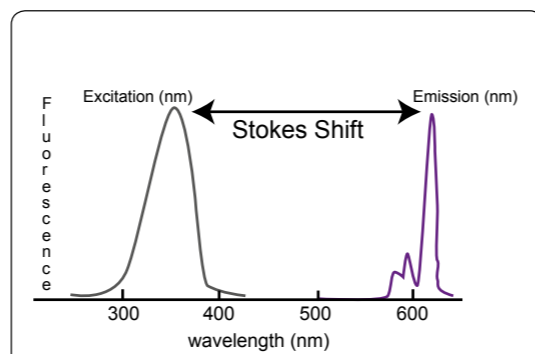
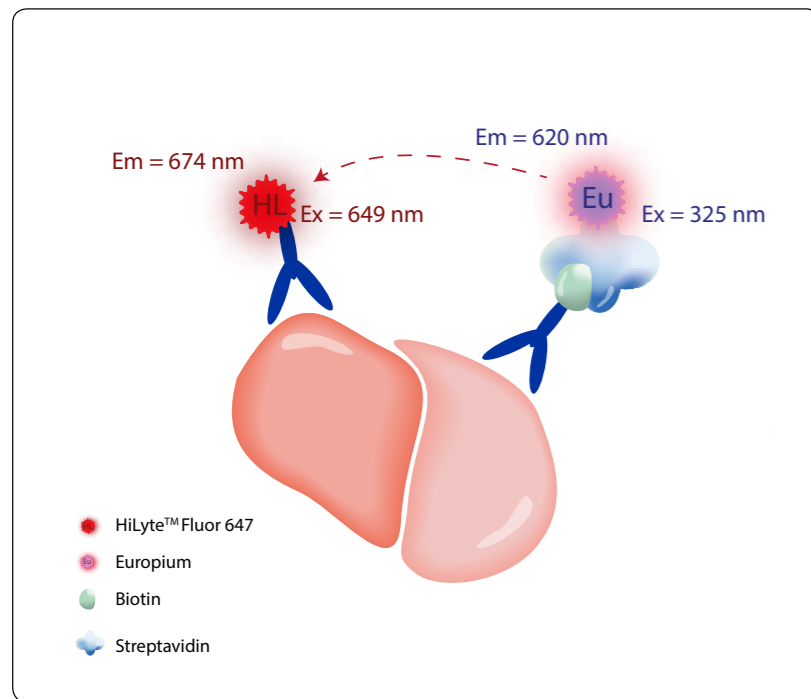


Fig 1. Stokes shift absorption and emission peaks for Europium.

Stokes shift is the difference between the absorption peak and the emission peak for fluorophores. Larger Stokes shift is always preferred which allows the use of broad excitation and emission filters that do not overlap, which in turn increases brightness and sensitivity. Fluorescent probes of smaller Stokes shift require filters that are very close together and do not include the entire area of the curves, thus reducing efficiency and brightness.

BENEFITS

- > Ideal for HTS
- > Large dynamic range
- > High sensitivity
- > Low interference

ASSAY DESIGN & DEVELOPMENT

- > Preparation of substrates labelled with
- > Europium and/or HiLyte™ Fluor 647
- > Validation of assay with inhibitor(s) or biological compounds
- > Detailed step by step assay protocol.

APPLICATIONS

- > FRET/TR-FRET substrates for protease activity detection
- > Protease based drug target screening and discovery
- > Protein-peptide interaction
- > Protein-protein interaction

TR-FRET pair

Donor	Ex/Em	Acceptor
Europium chelate	325/620 nm	HiLyte™ Fluor 647
Europium chelate	325/620 nm	CyLyte Fluor 5

GOOD TO KNOW

Typically biological samples generate fluorescence (proteins, antibodies, cells or tissues) that can interfere with the assay observations and therefore decrease the assay sensitivity.

TR (time-resolved) based assay technologies eliminate the background noise by choosing a longer detection interval after excitation, therefore increasing the assay sensitivity.

AnaTag™ protein labelling kits

AnaTag™ kits provide a convenient way to label your proteins, such as those used as reagents in immunofluorescence staining, fluorescence *in situ* hybridisation, flow cytometry and other biological applications.

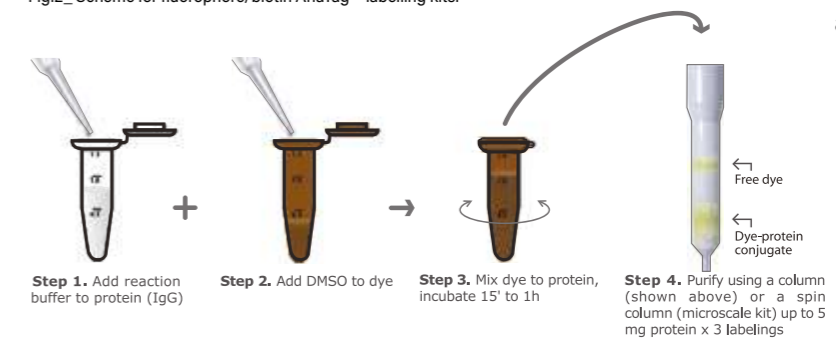
The kits use succinimide ester (NHS ester) conjugates, which react with the amine groups of the target protein to form stable carboxamide bonds. Please note that AnaTag™ are not convenient to label peptides.

Note: APC, B-PE, and R-PE fluorescent protein kits, make use of an SMCC conjugation method.

BENEFITS

- > FAST labelling
- > STABLE dye-protein conjugations
- > CONVENIENT format
- > All ESSENTIAL components for conjugation reactions and purification of dye-protein conjugates available.

Fig.2_ Scheme for fluorophore/biotin AnaTag™ labelling kits.



ORDERING INFORMATION

Label	Abs/Em (nm)	Catalogue #	
		REACTION SIZE	REACTION SIZE
		3 x 5 mg	3 x 200 µg
FLUOROPHORES			
AMCA-X	353/442	AS-72055	AS-72056
5-FITC	494/519	AS-72059	AS-72060
HiLyte™ Fluor 488	502/527	AS-72047	AS-72048
5 TAMRA	547/574	AS-72063	AS-72064
HiLyte™ Fluor 555	552/569	AS-72045	AS-72046
HiLyte™ Fluor 647	649/674	AS-72049	AS-72050
HiLyte™ Fluor 750	754/778	AS-72043	AS-72044
FLUORESCENT PROTEINS			
APC	650/660	AS-72111 (1x1mg)	n.a.
B-PE	545/575	AS-72112 (1x1mg)	n.a.
R-PE	565/575	AS-72113 (1x1mg)	n.a.
BIOTIN			
Biotin	n.a.	AS-72057 (3x10mg)	AS-72058
Europium chelate	AnaTag™ Europium Protein Labelling Kit	325/620 nm	AS-72246
TR-FRET			
Europium chelate & HiLyte™ Fluor 647	AnaTag™ Protein labelling kit for TR-FRET	Eu: 325/620 nm HL 647: 649/674 nm	AS-72247

FLUORESCENT PROTEINS AND REAGENTS

Our extensive repository of fluorescent proteins and reagents used in conjugation applications include:

- Biotinylating reagents (targeting several functional groups),
- Biotin-binding affinity-purified streptavidins,
- Fluorescent tags and their conjugates including phycobiliproteins and recombinant protein A applicable for a variety of conjugation-specific cellular and immune functional studies. ■

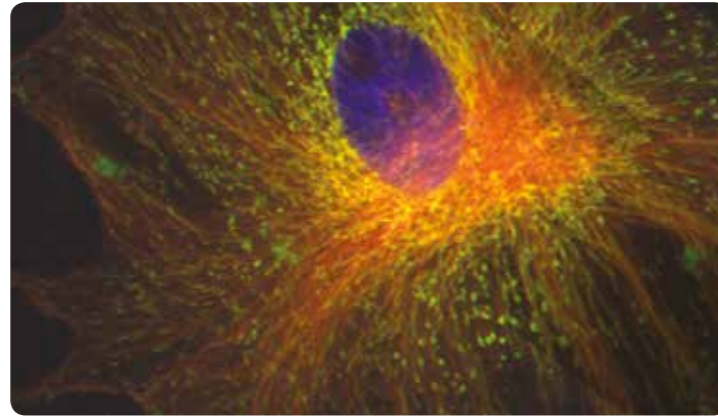


Fig.3_alpha-tubulins of bovine pulmonary artery endothelial cells probed with biotin-conjugated mouse anti-alpha-tubulin, visualized with HiLyte Fluor™ 647 conjugated streptavidin. Mitochondria were detected with mouse anti-Oxphos V complex, visualized with HiLyte Fluor™ 488-conjugated goat anti-mouse, nuclei stained with DAPI.

Biotins

The streptavidin-biotin interaction, at a dissociation constant of (Kd) on the order of $\sim 10^{-14}$ mol/L is one of the strongest non-covalent interactions known in

nature, typically occurring between a protein and a ligand. The complex is resistant to pH, organic solvents and other denaturing agents making

this interaction very stable and hence attributes to its importance in a number of biological applications including Western blotting, IHC, ELISA and FACS.

APPLICATIONS		ORDERING INFORMATION		
		PRODUCT	Abs/Em (nm)	CAT #
The basics	Biomolecules labelling and further detection with streptavidin/avidin	Biotin (d-Biotin)	n.a.	AS-21100 AS-21101
	More polar than biotin; used for cell tracing	Biocytin	n.a.	AS-60638
	The long chain (LC) helps reduce the sterical hindrance when binding to avidins	Biotin-LC	n.a.	AS-21112
		Biotin-X NTA	n.a.	AS-60655
The reactive forms	For carbohydrates and nucleic acids: reacts with exposed aldehyde groups formed in damaged DNA	ARP	n.a.	AS-60645
	Carboxy and carbonyl groups-reactive; substrate for transglutaminase	Biotin cadaverine	n.a.	AS-60648
	Thiol-reactive	Biotin C2 maleimide	n.a.	AS-60643
Fluorescent biotins	Green fluorescence	Biotin fluorescein	494/518	AS-60656
	Better binding and stronger fluorescence than Biotin fluorescein	Biotin-4-fluorescein	494/523	AS-60654
	Orange fluorescence	Biocytin TMR	554/581	AS-60658
Biotin quantitation kits		Biotin Quantitation Kit	n.a.	AS-72096
		Sensolyte® Biotin Quantitation Kit	n.a.	AS-72163



Streptavidin and Conjugates

ORDERING INFORMATION		
PRODUCT	Abs/Em (nm)	CAT #
Immuno-fluorescence assays		
Streptavidin	n.a.	AS-60659
Streptavidin, recombinant	n.a.	AS-72177-5 AS-72177-100 AS-72177-500 AS-72177-1000
Streptavidin, HRP conjugated	n.a.	AS-60668
Streptavidin, 5 - TAMRA conjugated	541/568	AS-60670
Streptavidin, FITC conjugated	495/520	AS-60659-FITC
Streptavidin, HiLyte™ Fluor 488 conjugated	495/524	AS-60665
Streptavidin, HiLyte™ Fluor 555 conjugated	555/565	AS-60666
Streptavidin, HiLyte™ Fluor 647 conjugated	650/668	AS-60667
Streptavidin, HiLyte™ Fluor 750 conjugated	754/778	AS-60659-H750
Streptavidin, B - phycoerythrin conjugated	545/575	AS-60662
Streptavidin, crosslinked allophycocyanin conjugated	652/662	AS-60663
Streptavidin, R - phycoerythrin conjugated	565/575	AS-60669
Streptavidin, Europium labelled	325/620	AS-72252
Kit		
HiLyte™ Fluor Labelled Streptavidin Sampler Kit Content: HiLyte™ Fluor 488, 555 and 647 conjugated streptavidin	-	AS-72003-20

Phycobiliproteins and Conjugates

Phycobiliproteins are natural fluorescent proteins present in cyanobacteria and some algae. B-PE and the closely related R-PE are the most intensively fluorescent ones. They are significantly brighter and more photostable than conventional organic dyes.

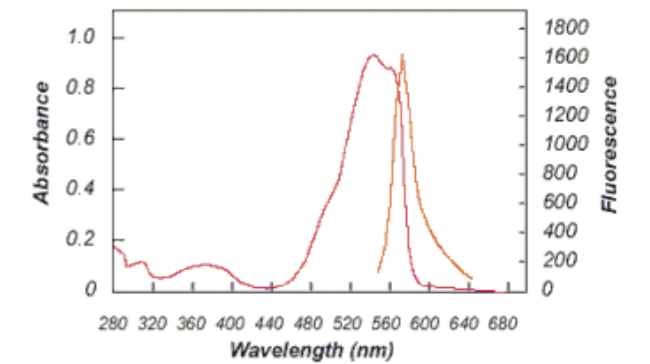


Fig. 4_Spectra of B-Phycoerythrin analysis or primary antibodies in IHC.

APPLICATIONS		ORDERING INFORMATION		
		PRODUCT	Abs/Em (nm)	CAT #
Excellent fluorescent tags for versatile labelling owing to bright signals, large Stokes shift and low quenching properties. Applicable in flow cytometry and immunoassays.		B - PE (B - Phycoerythrin)	545/575	AS-82001
		C - PC (C - Phycoerythrin)	616/647	AS-82003
		CL - APC (Cross Linked - Allophycocyanin)	651/662	AS-82002
		R - PE (R - Phycoerythrin)	565/575	AS-82004
		SMCC Activated CL-APC (Cross Linked-Allophycocyanin)	651/662	AS-72108
		SMCC Activated B-PE (B-Phycoerythrin)	545/575	AS-72109
		SMCC Activated R-PE (R-Phycoerythrin)	565/575	AS-72110



Recombinant Protein A Conjugates

Protein A binds to the Fc domain of IgG's from most mammals. When conjugated to biotin or fluorescent dyes, it can be used as a universal detection reagent for primary antibodies.

APPLICATIONS

Fluorescent Protein A can be used for Western Blotting, immunohistochemistry and immunofluorescence.



ORDERING INFORMATION

PRODUCT	Abs/Em (nm)	CAT #
Protein A-Biotin Conjugate	n.a.	AS-72234
Protein A-HiLyte™ Fluor 488 Conjugate	499/523	AS-72235
Protein A-HiLyte™ Fluor 555 Conjugate	553/568	AS-72236
Protein A-HiLyte™ Fluor 647 Conjugate	649/674	AS-72237
Protein A-HiLyte™ Fluor 750 Conjugate	754/778	AS-72239

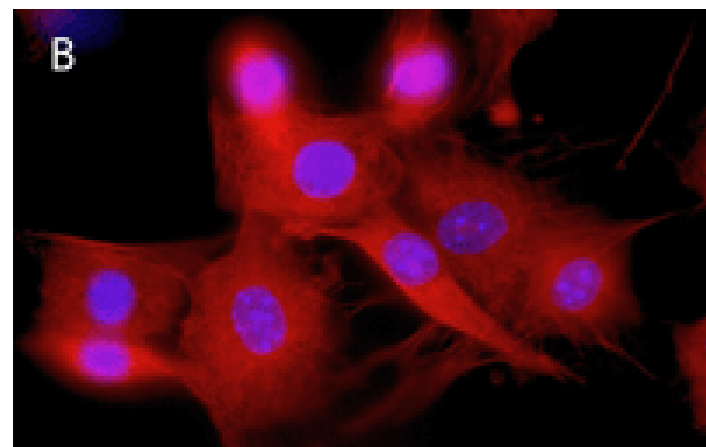
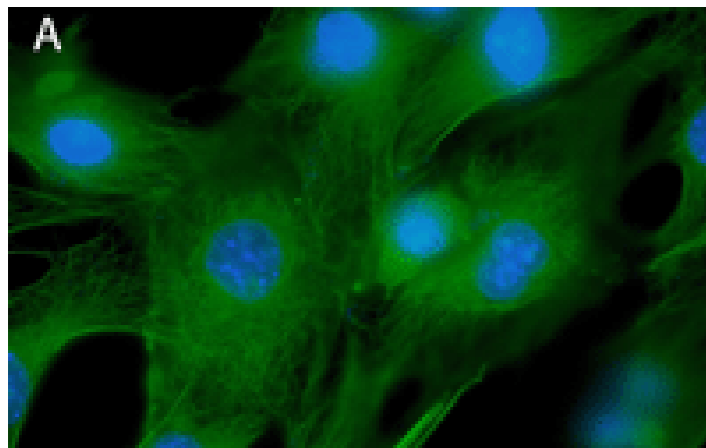


Fig.5_3T3 cells stained with Rabbit anti-Tubulin IgG followed by Protein A-HiLyte™ Fluor 488 (A) and Protein A-HiLyte™ Fluor 647 (B).



PHYSIOLOGICAL AND NEUROLOGICAL INDICATORS

The use of molecular fluorescence for sensing physiological and neurological signals offers several advantages. Among these are high sensitivity (down to the single molecule), on-off switchability, and submillisecond temporal resolution. We offer a quality selection of physiological and neurological indicators (such as Fura-2, Indo-1, and Rhod-2). Our UltraPure Grade AM

esters of fluorescent indicators are typically at least 95% pure by HPLC analysis, although purity often exceeds 98%. Furthermore, we offer custom package service for the AM esters of many of our Ca²⁺ indicators within minimal charge for your convenience and for reduced risk of deterioration during storage. ■

Enzyme substrates

APPLICATIONS

PRODUCT	Abs/Em (nm)	CAT #
Protease-catalysed hydrolysis slowly yields brightly green fluorescent dye-labelled peptides. More slowly digested by MMP-1 than water-soluble collagen, but it is more specific for the enzyme	492/515	AS-85102
Used for quick fluorometric measurement of collagenase activity; useful for detecting MMP-1 activity	492/515	AS-85111
Useful for screening Gelatinase A (MMP-2) and Gelatinase A inhibitors, as well as for other gelatinases and collagenases that specifically degrade (Type IV) Collagen. Additionally, lightly fluorescein-labelled collagen may be useful for continuous assays monitored by fluorescence polarisation	492/515	AS-85112
Fluorometric measurement of elastase activity. This insoluble elastin derivative is more specific for elastase than AS-85113	492/515	AS-85103
Soluble bovine neck ligament elastin	492/515	AS-85113
Efficiently digested by gelatinases and collagenases	492/515	AS-85145
Chromogenic N-acetylgalactosaminidase substrate	399/NA	AS-85618
Cell-permeable substrate of oxidases (including peroxidase)	495/529	AS-85706
Generic substrate of oxidases (including peroxidase) in mitochondria	507/529	AS-85711
Sensitive and stable fluorogenic substrate for HRP but also an ultrasensitive probe for H ₂ O ₂ . In the presence of HRP and H ₂ O ₂ , ADHP generates highly fluorescent resorufin	573/590	AS-85500
Luminescent substrate for firefly luciferase	328/532	AS-82250
D-Luciferin, potassium salt *UltraPure Grade*	328/532	AS-82252
One of the most sensitive fluorogenic substrates available for detecting β-galactosidase	492/520	AS-85600
Unlike FDG that requires a two-step hydrolysis to generate maximum fluorescence, resorufin β-D-galactopyranoside requires only a single-step hydrolysis reaction. This substrate is especially useful for sensitive enzyme measurements in ELISAs	573/585	AS-85617
Resorufin ethyl ether is a fluorogenic cytochrome P-450 substrate that generates red fluorescent product upon enzyme cleavage	571/585	AS-85715
Resorufin methyl ether is a fluorogenic cytochrome P-450 substrate that generates red fluorescent product upon enzyme cleavage	571/585	AS-85707
Resorufin pentyl ether is a fluorogenic cytochrome P-450 substrate that generates red fluorescent product upon enzyme cleavage	571/585	AS-85728



ORDERING INFORMATION

PRODUCT	Abs/Em (nm)	CAT #
Collagen (Type I), FITC conjugated *Water Insoluble*	492/515	AS-85102
Collagen (Type I), FITC conjugated *Water Soluble*	492/515	AS-85111
Collagen (Type IV), FAM conjugated	492/515	AS-85112
Elastin, FITC-Conjugated *Water Insoluble*	492/515	AS-85103
Elastin, FITC Conjugated	492/515	AS-85113
Gelatin, FITC Conjugated	492/515	AS-85145
4-Nitrophenyl-N-acetyl-b-D-galactosaminide	399/NA	AS-85618
H2-DCFDA	495/529	AS-85706
Dihydrorhodamine 123	507/529	AS-85711
ADHP	573/590	AS-85500
D-Luciferin, free acid *UltraPure Grade*	328/532	AS-82250
D-Luciferin, potassium salt *UltraPure Grade*	328/532	AS-82252
FDG [Fluorescein di-b-D-galactopyranoside]	492/520	AS-85600
Resorufin b-D-Galactopyranoside	573/585	AS-85617
Ethoxyresorufin	571/585	AS-85715
Methoxyresorufin	571/585	AS-85707
Pentoxyresorufin	571/585	AS-85728

Fluorescent indicators

APPLICATIONS

Intracellular pH indicator	Reactive pH indicator for slightly acidic pH range	
	Cell-permeable fluorescent pH indicator, Better conjugant than FITC, resists hydrolysis, superior stability.	
	pH dependent fluorescence; maximum intensity in basic pH.	
Ca ²⁺ indicators	Visible light excitable Ca ²⁺ indicators	
	UV-Excitable	
	Non-luminescent	
	Solubilising agent for AM esters of ion indicators	
	Cl ⁻ indicators	Greater sensitivity to chloride ion detection with higher fluorescence quantum yield
	Membrane Potential Detectors [Fast Response]	Highly water soluble microinjectible
		Displays optical response good for transient potential changes in excitable cells.
		Applicable in neuronal imaging
	Membrane Potential Detectors [Slow Response]	Temperature sensitive 488 nm-excitable membrane potential probe.
		Lipophilic membrane dye
Less temperature-sensitive than DIBAC4(3)		
Cationic lipid bilayer translocating dye		
Mitochondrial marker dye		
Environment sensitive dye for studying membrane and protein structures.		
Membrane polarization dependent		
Lipophilic membrane dye		
Mitochondrial membrane potential sensors effective than Rhodamine.		

ORDERING INFORMATION		
PRODUCT	Abs/Em (nm)	CAT #
5(6) - CFDA, SE	492/517	AS-89000
5(6) - FAM	494/519	AS-81002
Fluorescein *Fluorescence Reference Standard*	490/514	AS-80001
Calcein blue, AM (Cell permeant viability indicator)	322/437	AS-89205
Calcein, AM	494/517	AS-89201
Calcein, AM *UltraPure Grade*	494/517	AS-89202
Calcein, AM *UltraPure Grade*, 5 mM solution in anhydrous DMSO	494/517	AS-89203
Calcein; AM *UltraPure Grade* *Small Package*	494/517	AS-89204
Rhod - 2, AM *UltraPure Grade*	549/575	AS-84035
Fura - 2, AM	363/512	AS-84015
Fura - 2; AM *UltraPure Grade* *Small Package*	363/512	AS-84017
Indo - 1, AM	346/475	AS-84006
EGTA, AM	n.d.	AS-84100
EGTA, tetrasodium salt, 10 mM aqueous solution *UltraPure Grade*	n.d.	AS-84097
Pluronic [®] F - 127 *Cell Culture Tested *	n.d.	AS-84040
Pluronic [®] F - 127, 10% solution in water	n.d.	AS-84042
Pluronic [®] F - 127, 20% solution in DMSO	n.d.	AS-84041
MQAE	350/460	AS-84925
Di - 2 - ANEPEQ (JPW 1114)	517/721	AS-84713
Di - 4 - ANEPPS	496/705	AS-84723
RH414	532/716	AS-84728
DIBAC4(3)	493/516	AS-84700
Dil	549/565	AS-84711
DiSBAC2(3)	535/560	AS-84702
DiSC3(5)	651/675	AS-84923
JC - 1	514/529	AS-88060
Laurdan	364/497	AS-88201
Oxonol VI	599/634	AS-84704
Prodan	363/497	AS-88212
TMRE	549/574	AS-88061
TMRM	549/573	AS-88065

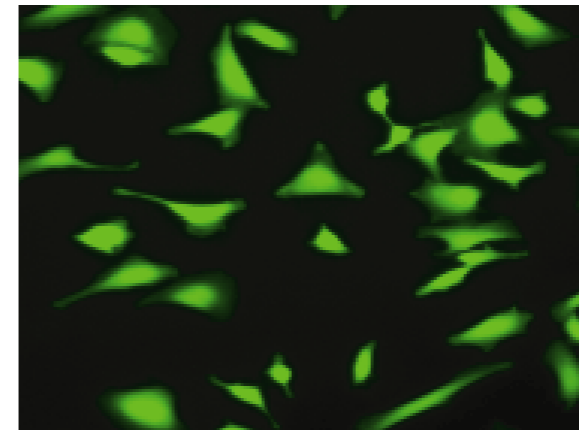


Fig.6_HeLA cells stained with AnaSpec's Calcein AM dye.

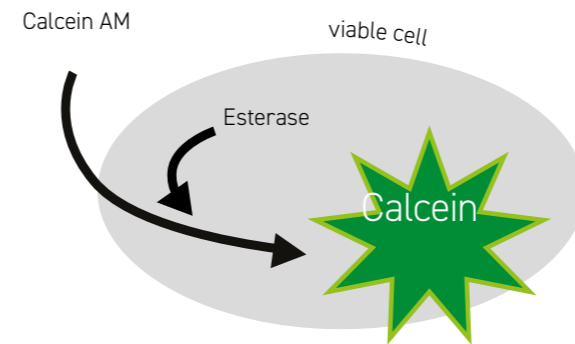


Fig.7_Calcein AM (non-fluorescent) upon entry into cell is acted upon by Esterases to be converted into fluorescent Calcein.

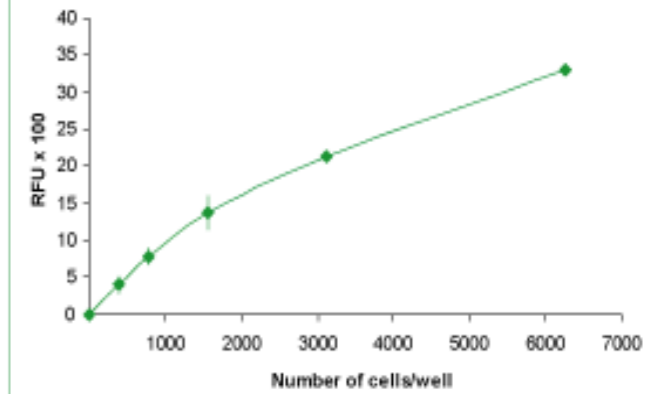


Fig.8_3T3 cells exposed to AnaSpec's Calcein AM dye and resulting fluorescence readings.

Neurological indicators

APPLICATIONS

Neurological indicators	Binds to a wide range of amyloid inclusions <i>in situ</i>
	For early diagnosis and classification of amyloid deposition and differentiation from other glomerular fibrillar deposits
	Functional imaging of neurons: used for monitoring membrane potential, synaptic activity and ion channel activity of neurons
	Amyloid stain which binds rapidly and specifically to amyloid sheet fibrils but not to monomer or oligomeric intermediates

ORDERING INFORMATION		
PRODUCT	Abs/Em (nm)	CAT #
BSB	340/520	AS-88300
Congo Red *UltraPure Grade*	497/NA	AS-83016
RH414	532/716	AS-84728
Thioflavin T *UltraPure Grade*	412/482	AS-88306

⇒ DNA BINDING DYES

DNA/RNA concentration is often measured by UV absorbance at 260 nm. This method, however, is not as accurate and sensitive as DNA quantitation by using fluorescent dyes. We offer a variety of nucleic acid stains for detecting nucleic

acids. These stains can be used for DNA quantitation in solutions or in cells. We also offer reagents for labelling nucleotides and nucleic acids. ■

Fluorescent Nucleic Acid Dyes

APPLICATIONS

PRODUCT	Abs/Em (nm)	CAT. #	
Cell Impermeant Nucleic Acid Stains	GC region specific; Applicable for multi-color fluorescence microscopy, confocal laser-scanning microscopy and flow cytometry.	7 - AAD	546/647 AS-83201
	A fluorescent photoaffinity label that couples covalently to nucleic acids upon irradiation.	Ethidium monoazide bromide	462/625 AS-83214
	Nuclear or chromosomal counterstain.	Propidium iodide	535/617 AS-83212
		Propidium iodide, 1.0 mg/mL solution in water	AS-83215
Cell Permeant Nucleic Acid Stains	Binds to DNA/RNA (red fluorescence) upon oxidation.	Dihydroethidium	518/605 AS-85704 AS-85718
	Biomarker for cell cycle and proliferation.	BrdU	n.d. AS-83224
	AT-selective minor groove binder exhibiting enhanced fluorescence in the presence of DNA.	DAPI	358/461 AS-83210 AS-83211
	DNA minor groove binding dye.	Hoechst 33258, 20 mM solution in water	350/461 AS-83219
		Hoechst 33342, 20 mM solution in water	AS-83218
Others	Biotinylating agent; reacts with exposed aldehyde groups in damaged DNA.	ARP	n.d. AS-60645
	Building blocks to prepare amino-containing nucleotides.	Aminocallyt dUTP, 4 mM in TE buffer *UltraPure Grade*	n.d. AS-83203

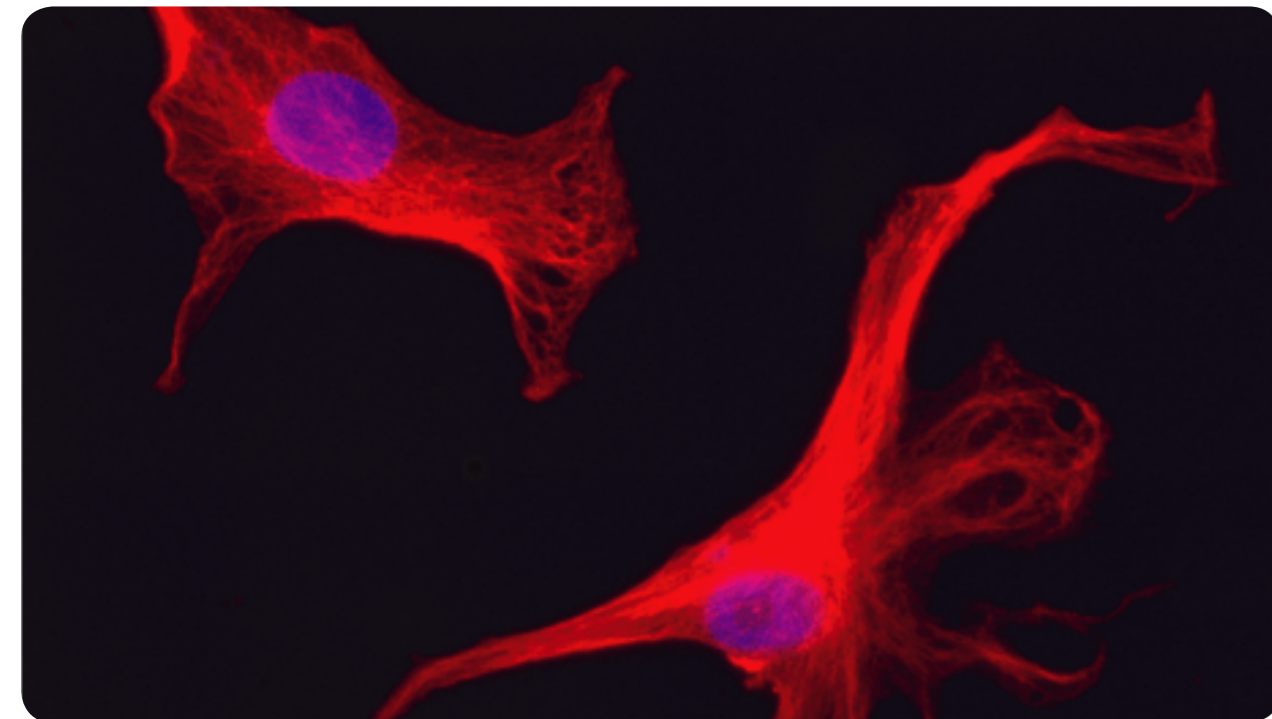


Fig.9 Alpha-tubulin in bovine pulmonary artery endothelial cells were detected with mouse anti alpha-tubulin primary antibody, visualized with Allophycocyanin (APC)-conjugated goat anti mouse IgG. Nuclei were stained with DAPI (Cat# AS-83210).



Protein analysis

Protein identification
Recombinant proteins Fluorescent dyes and reagents Protein analysis

⇒ ELECTROPHORESIS PRODUCTS

iD Gels

iD PAGE Gels are a series of high-performance polyacrylamide gels suitable for SDS-PAGE and Native-PAGE. This second-generation PAGE gels is based on Bis-Tris buffer, offering a greater resolution and higher stability than the first-generation Tris-Glycine gels.

iD PAGE Gels are 1 mm thick gels available in 10, 12 and 15 well formats, either in gradients (4-20%, 4-12%, and 8-16%) or at fixed (8%, 10%, and 12%) concentrations. Pre-cast gels can be run in MOPS and MES buffers but not in Tris-Glycine buffer.

BENEFITS

- High resolution
- Large loading volume (up to 80 µL)
- Long shelf life (up to 12 months)
- No special loading tips required
- Compatible with most mini-gel tanks



ORDERING INFORMATION

DESCRIPTION	SIZE	WELL VOL.	RUNNING BUFFER	TRANSFER BUFFER	SEPARATION RANGE	CAT #			
iD PAGE Gels									
iD PAGE Gel, 4-20%, 10 wells	1 box of 10	80 µL	MOPS, MES	Tris-Bicine	250-10 kDa	ID-PA4201-010			
iD PAGE Gel, 4-20%, 12 wells		60 µL				ID-PA4201-012			
iD PAGE Gel, 4-20%, 15 wells		40 µL				ID-PA4201-015			
iD PAGE Gel, 4-12% 10 wells		80 µL				ID-PA4121-010			
iD PAGE Gel, 4-12% 12 wells		60 µL			ID-PA4121-012				
iD PAGE Gel, 4-12% 15 wells		40 µL			ID-PA4121-015				
iD PAGE Gel, 8-16%, 10 wells		80 µL			ID-PA8161-010				
iD PAGE Gel, 8-16%, 12 wells		60 µL			ID-PA8161-012				
iD PAGE Gel, 8-16%, 15 wells		40 µL			ID-PA8161-015				
iD PAGE Gel, 12%, 10 wells		80 µL			ID-PA0121-010				
iD PAGE Gel, 12%, 12 wells		60 µL			ID-PA0121-012				
iD PAGE Gel, 12%, 15 wells		40 µL			ID-PA0121-015				
iD PAGE Gel, 10%, 10 wells		80 µL			ID-PA0101-010				
iD PAGE Gel, 10%, 12 wells		60 µL			ID-PA0101-012				
iD PAGE Gel, 10%, 15 wells		40 µL			ID-PA0101-015				
iD PAGE Gel, 8%, 10 wells		80 µL			ID-PA0081-010				
iD PAGE Gel, 8%, 12 wells		60 µL			ID-PA0081-012				
iD PAGE Gel, 8%, 15 wells		40 µL			ID-PA0081-015				
iD Buffers									
iD MOPS Running Buffer Powder		5 packs (for 5x1L running buffer)			-	-	-	-	ID-WCRUB1-005
iD Sample Buffer 5x	5 mL	-	-	-	-	ID-WCSAB1-005			

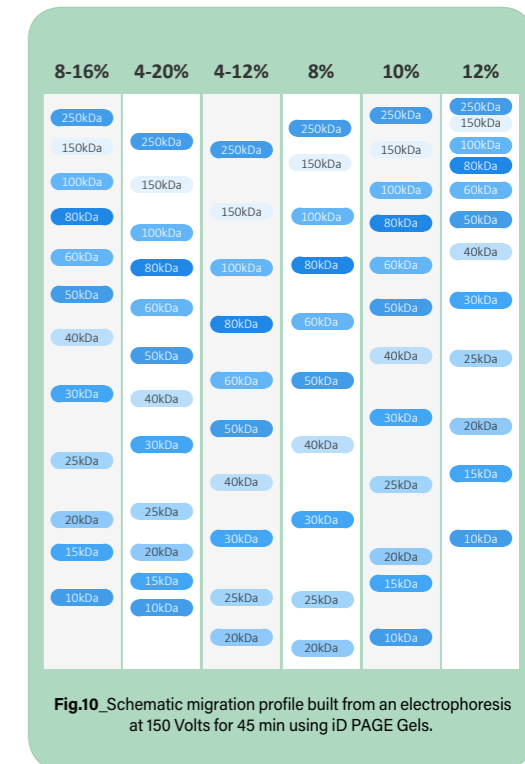
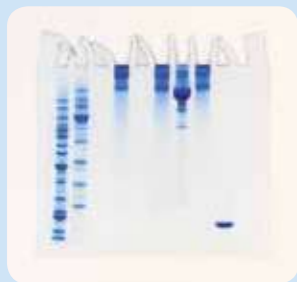


Fig.10_Schematic migration profile built from an electrophoresis at 150 Volts for 45 min using iD PAGE Gels.

iD Molecular Weight Standards

iD Protein Markers are designed to determine the molecular mass of proteins on SDS-PAGE and the transfer efficiency in Western Blot*.

iD BLUELADDER REVEALERS



iD BlueLadder Revealers are mouse monoclonal antibodies targeting the blue dye of prestained proteins in MW ladders.

Unconjugated and HRP-conjugated iD BlueLadder Revealers can be used to visualise the marker blue bands throughout the whole process of Western Blotting up to membranes or X-Ray films and can act as a positive control of the blotting efficiency.

Moreover, it makes the positioning of the marker on the blot significantly easier and highly accurate than when done manually.

ID BROAD PRE-STAINED PROTEIN WEIGHT MARKER

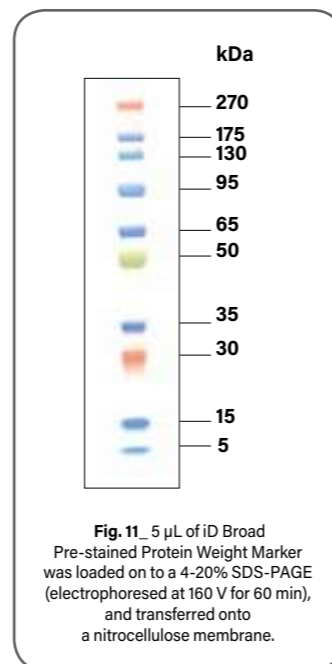
Our iD Broad protein weight markers include ten highly purified pre-stained proteins in the range of 5 to 270 kDa. To ensure proper identification of each protein, facilitate visualisation with high resolution, bands are covalently coupled to 4 different dyes:

- > 30 kDa band is red
- > 50 kDa band is green
- > 270 kDa band is orange
- > 5 kDa, 15 kDa, 35 kDa, 65 kDa, 95 kDa, 130 kDa and 175 kDa bands are blue

These 7 blue bands can hence be detected using the iD BlueLadder Revealers, which stain the blue bands of prestained markers.

BENEFITS

- * Easy identification of the Marker band
- * Wide range of molecular weights covered



GOOD TO KNOW

iD Wide Range Unstained Protein Weight Marker and iD multi Color pre-stained Protein Weight Marker are now replaced by the iD Broad Prestained Protein Weight Marker which combines benefits of both markers.

WESTERN BLOTTING



OVERVIEW OF WESTERN PROCEDURES

iD Western 1H Blot Kits

1.25 hours!

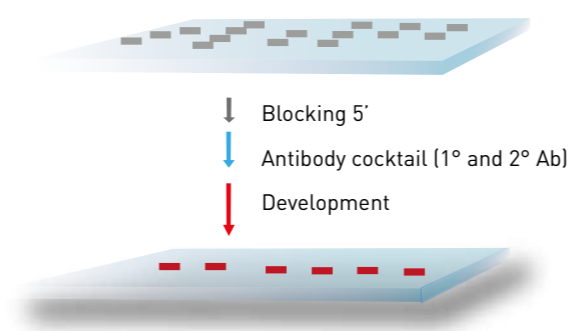


Fig.13_ The iD Western 1H protocol replaces the classical 3-step Western Blotting process, which takes nearly 5 hours.

After the protein transfer from the gel to the membrane:
 > Incubate the membrane in the blocking solution for 5 min.
 > Wash
 > Incubate the membrane for 40 min in a mixture containing the primary and secondary antibodies
 > Proceed with the revelation step (in colorimetry or chemiluminescence)

A 5 MIN STEP ONLY

iD BLOCKING KIT

The iD Blocking Kit is composed of 2 optimised solutions. After mixing, the iD blocking solution ensures a quick blocking of any membrane or solid surface of multi-well plates. With the iD Blocking kit, blocking step takes 5 minutes only and significantly increases the Western Blotting detection sensitivity compared to the classical milk or BSA blocking.

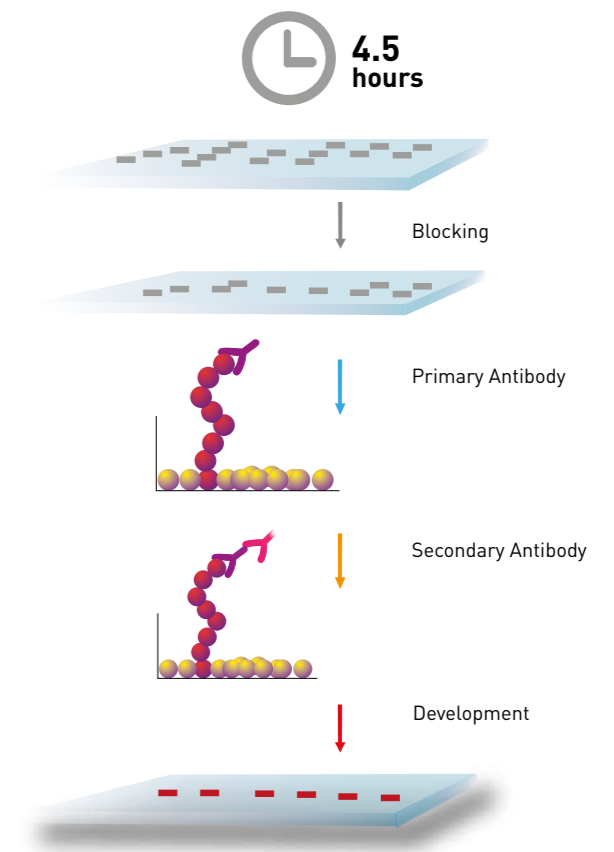
iD Western 1H Detection Kits

The iD Western 1H Detection kits have been optimised to achieve a Western blotting in 1H. A proprietary blocking reagent (ID-WCBL01-001) significantly increases the signal-to-noise ratio.

BENEFITS

- Fewer and shorter steps than other Western Blotting procedures.
- Reagent formulation optimised to provide low background.
- Reproducible results.
- No additional secondary antibody needed.

Classical Western Blot Detection



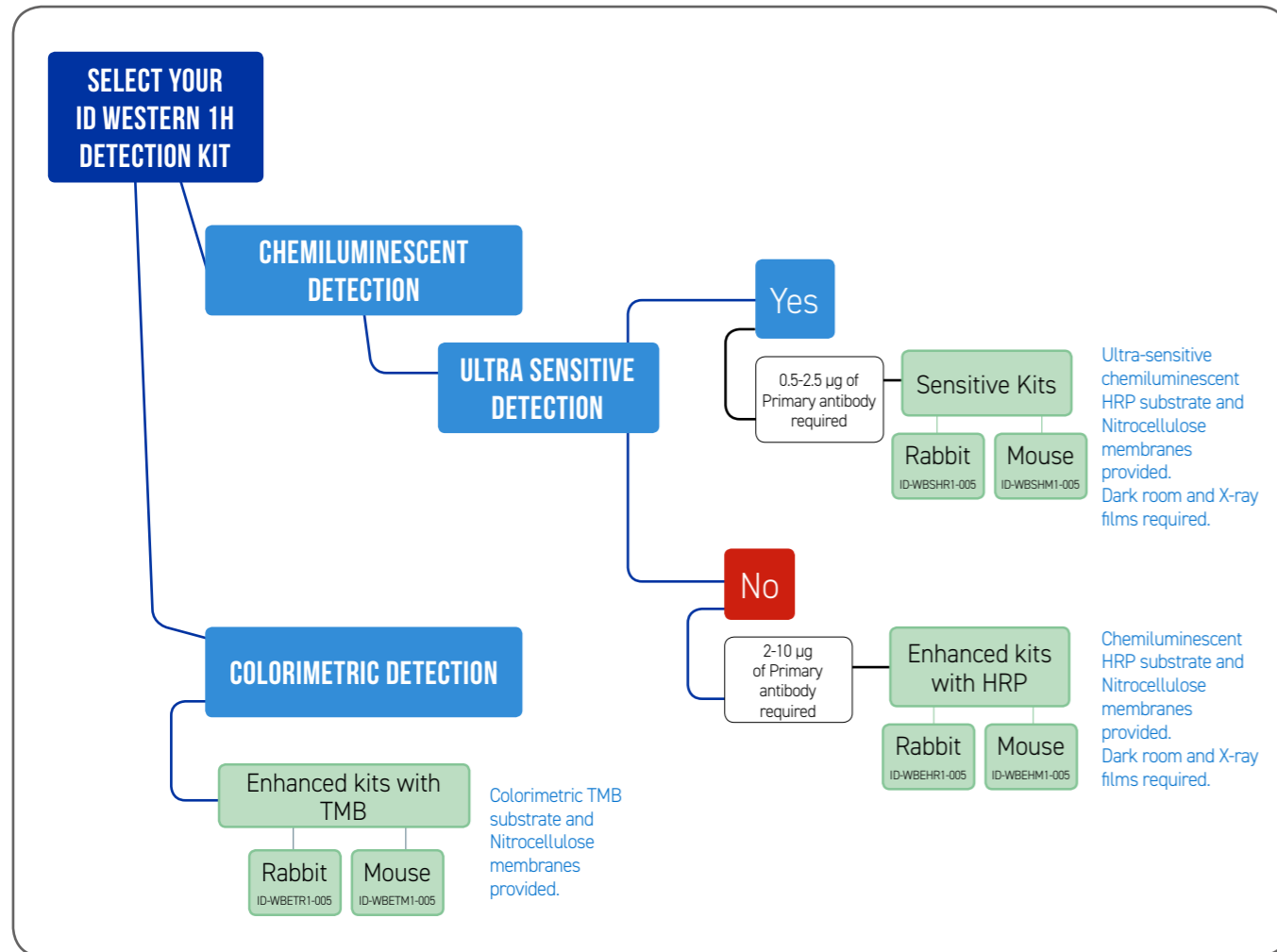
ORDERING INFORMATION

DESCRIPTION	SIZE	CAT #
iD Broad Pre-stained Protein Weight Marker	250 μ l	ID-MWBPS1-250
iD BlueLadder Revealer	100 μ g/50 μ l	ID-MWLRV1-050
iD BlueLadder Revealer-HRP	100 μ g/50 μ l	ID-MWLRV1-H50

Note:
 *The iD wide range unstained and iD multi-color pre-stained standards contain SDS and dithiothreitol.

Western 1H kit selection

The kits contain all the necessary reagents, buffers and materials to perform a Western blotting. All you need to provide is the primary antibody targeting your protein of interest. No additional secondary antibody is required. A proprietary secondary antibody producing a very high signal is included in the kit.



KIT CONTENT

Components	Enhanced Kits	Sensitive Kits
Pretreat Solution A	50 mL	50 mL
Pretreat Solution B	50 mL	50 mL
WB-1 Solution	0.5 mL	0.5 mL
WB-2 Solution	50 mL	50 mL
5x Wash Solution	125 mL	125 mL
iD Nitrocellulose Membrane (ID-WCNIM1-005)	5 sheets	5 sheets
iD TMB Colorimetric Substrate	15 mL	-
iD HRP Chemiluminescent Substrate	-	2x 7.5 mL
iD HRP Super Chemiluminescent Substrate	-	5 +10 mL

The TMD and HRP, substrates and the blocking reagent are available separately.

ORDERING INFORMATION		
DESCRIPTION	SIZE	CAT #
iD Western 1H Detection kit		
Rabbit		
iD Western 1H - Enhanced Kit with TMB	1Kit (5 Assays)	ID-WBETR1-005
iD Western 1H - Enhanced Kit with HRP	1Kit (5 Assays)	ID-WBEHR1-005
iD Western 1H - Sensitive Kit with HRP	1Kit (5 Assays)	ID-WBSHR1-005
Mouse		
iD Western 1H - Enhanced Kit with TMB	1Kit (5 Assays)	ID-WBETM1-005
iD Western 1H - Enhanced Kit with HRP	1Kit (5 Assays)	ID-WBEHM1-005
iD Western 1H - Sensitive Kit with HRP	1Kit (5 Assays)	ID-WBSHM1-005
iD Substrate Kits		
iD HRP Chemiluminescent Substrate Kit	(2x30ml) for 20 membranes	ID-SUHRP1-060
iD TMB Colorimetric Substrate Kit	60ml for 20 membranes	ID-SUTMB1-060
Blocking Kit		
iD Blocking Kit	100ml A + 100ml B (for 10 membranes)	ID-WCBL01-001

iD SENSOLYTE® ASSAY KITS

Custom Fluorescent Assays

DESIGN AND DEVELOPMENT

By leveraging our expertise in protein labelling, FRET & Fluorogenic peptide substrate synthesis, and assay development, we can minimise your development time, while delivering the highest quality assay(s), or labelled substrate(s).

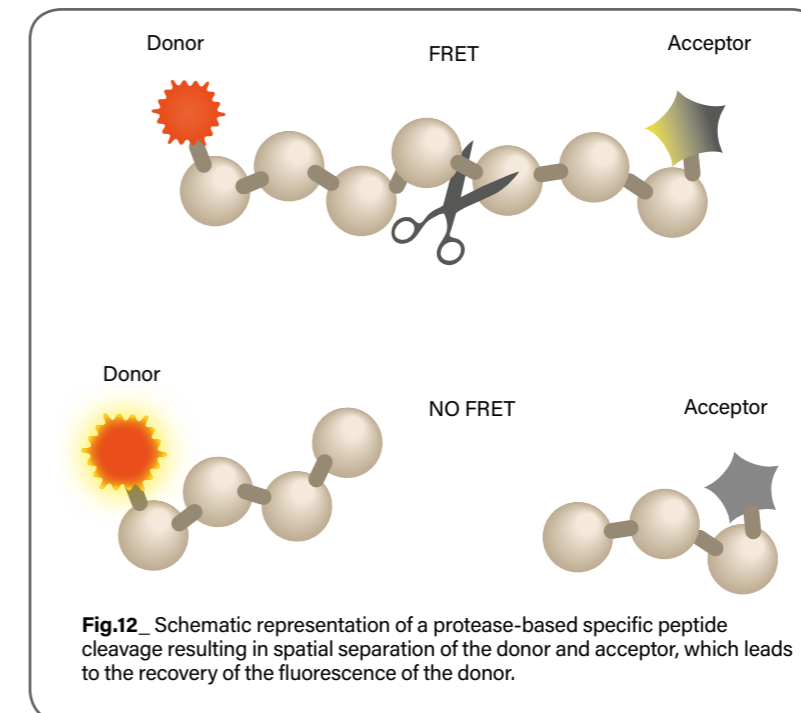


Fig.12 Schematic representation of a protease-based specific peptide cleavage resulting in spatial separation of the donor and acceptor, which leads to the recovery of the fluorescence of the donor.

APPLICATIONS

- HTS detection of protease activity, protease activators and inhibitors
- Protease based drug target screening and discovery
- Protein-peptide interaction

BENEFITS

- Homogeneous assay format ideal for HTS
- Full spectrum of dyes and quenchers covering all detection channels

SERVICE

- Design and preparation of FRET, TR-FRET and fluorogenic substrates & assays
- Preparation of labelled quenched peptide or protein substrates
- Validation of assay with inhibitor(s) or biologicals
- Detailed step by step assay protocol.

“ WE KNOW THAT CONFIDENTIALITY IS IMPORTANT TO YOU, AND WILL TREAT YOUR PROJECT AND DATA WITH THE UTMOST CARE AND RESPECT. ”

GOOD TO KNOW

FRET or Fluorescence or Förster resonance energy transfer is a distance-dependent transfer of excited state energy from an initially excited donor to an acceptor, with the donor molecule typically emitting at shorter wavelengths that overlap with the absorption of an acceptor. FRET occurs when a donor (fluorophore) and an acceptor (another fluorophore or quencher) are within a specified distance, usually within 10-100 Å. Within this distance, when a donor transfers its resonance energy to a quencher, a decrease in the donor fluorescence is seen.

In TR-FRET (Time-Resolved Fluorescence Resonance Energy Transfer) the donor molecule is a Lanthanide metal, such as Europium (Eu), with a long-lived fluorescence. The long-lived fluorescence is characterised by a large Stoke's shift providing a high signal-to-noise ratio due to minimal crosstalk between excitation and emission wavelengths.

Fluorogenic Assays make use of substrates that are labelled with a fluorophore but no quencher. The C-terminal end-specific dyes that are used in this type of assay are quenched by the peptide itself. Upon peptide cleavage by a specific protease, the fluorescence increases.

ALSO AVAILABLE

- Protein Labelling with Fluorescent dyes, and quenchers
- Protein-peptide conjugation (KLH, BSA, OVA)

Catalogue Assays

Our portfolio of iD Sensolyte® Assay kits contains many sensitive FRET based assays designed for activity detection of specific proteases and other enzymes. ELISAs are also available to detect specific biological targets.

BENEFITS

- Optimised for highly sensitive detection of enzyme activities
- Compatible with high throughput screening (HTS) for use in drug discovery
- One-step homogeneous assays
- Convenient mix-and-read formats (for select proteases)
- iD Sensolyte® specialised services available

iD SENSOLYTE® ASSAY KITS BY RESEARCH TOPIC



Alzheimer's



Cell adhesion



Multiple Sclerosis



Epigenetics



Parkinson



Oxidative stress



Bone



Cardiovascular



Cancer & Apoptosis



Viral & Bacterial

iD OPTIMISATION

We can customise and scale up any iD Sensolyte® assay kit to suit your specific application.

Bulk FRET or Fluorogenic Substrate amounts are conveniently offered separately from our assay kits, if you prefer to develop your own HTS assays.

SCREENING SERVICES

Have you found an iD Sensolyte® assay kit that works great, but have no time for testing? We can save you time and money by screening your small molecules or biologicals for you.



Alzheimer's Disease

The important roles of β -Amyloid, Tau and related enzyme activities such as secretases, cathepsins and Neprilysin, in Alzheimer's disease (AD) continue to be of targeted interest among AD researchers worldwide. Our highly sensitive fluorimetric assay kits including industry's first- Green Pin1 assay kit and related kits (secretase etc.) add to our vast and unique collection of Amyloid peptides to advance AD research. ■



Multiple Sclerosis

Eurogentec supports MS/EAE research. In addition to its suite of peptides, the company provides assay kits and antibodies that facilitate the advancement of this research. Proteolipid protein (PLP) and Myelin Oligodendrocyte Glycoprotein (MOG) are suspected antigens in the pathogenesis of MS. Our ELISA assays for quantifying autoimmune IgG's directed to MOG or PLP are the first in the industry. As are antibodies against MOG, PLP and MBP. ■



OUR PRODUCT SELECTION*

ASSAY KITS		Abs/Em	LOWEST DETECTION LIMIT	CAT #
Acetylcholinesterase	Sensolyte® 520 Acetylcholinesterase Activity Assay Kit Fluorimetric	490/520nm	8 pg/mL	AS-72242
Secretases & Aggreganase	Sensolyte® 520 α -secretase Assay kit *Fluorimetric*	490/520 nm	0.31 ng/well	AS-72085
	Sensolyte® β -secretase 2 Activity Assay *Fluorimetric*	490/520 nm	10 ng/well	AS-72225
	Sensolyte® 520 β -Secretase 1 Assay Kit *Fluorimetric*	490/520 nm	0.03 mU/mL	AS-71144
ADAM 10	Sensolyte® 520 ADAM10 Activity Assay Kit *Fluorimetric*	490/520 nm	0.25 ng/mL	AS-72226
β -Amyloid	Sensolyte® Anti-Human β -Amyloid (1-40) Quantitative ELISA	Abs = 450 nm	2 pg/mL	AS-55551
	Sensolyte® Anti-Human β -Amyloid (1-42) Quantitative ELISA	Abs = 450 nm	2 pg/mL	AS-55552
	Sensolyte® Thioflavin T β -Amyloid (1-42) Aggregation Kit	440/484 nm	n.d.	AS-72214
	Sensolyte® Thioflavin T β -Amyloid (1-40) Aggregation Kit	440/484 nm	n.d.	AS-72213
Meprin	Sensolyte® 520 Meprin β Activity Assay Kit *Fluorimetric*	490/520 nm	0.048 ng/mL	AS-72254
Neprilysin	Sensolyte® 520 Neprilysin Activity Assay Kit *Fluorimetric*	490/520 nm	0.78 ng/mL	AS-72223
Pin 1	Sensolyte® Green PIN1 Activity Assay Kit *Fluorimetric*	490/520 nm	n.d.	AS-72240

*For a full list of products and product citations, please refer to the product pages online. For related recombinant Tau proteins, refer to page 6.



OUR PRODUCT SELECTION*

ASSAY KITS		Abs/Em	DYNAMIC RANGE	LOWEST DETECTION LIMIT	CAT #
Anti-PLP (Proteolipid protein) IgG	Sensolyte® Anti-PLP (139-151) IgG Quantitative ELISA Kit (mouse) *Colorimetric*	450 nm	8-500 ng/mL	100 pg	AS-55524
	Sensolyte® Anti-PLP (178 - 191) IgG Quantitative ELISA Kit (Mouse) *Colorimetric*	450 nm	8-500 ng/mL	100 pg	AS-55523
Anti-MOG (Myelin Oligodendrocyte Glycoprotein) IgG	Sensolyte® Anti-Rat MOG (1-125) Assay *Colorimetric*	450 nm	8-500 ng/mL	1 ng/mL	AS-55157
	Sensolyte® Anti-Human MOG (1-125) Assay *Colorimetric*	450 nm	8-500 ng/mL	1 ng/mL	AS-55153-H
	Sensolyte® Anti - MOG (35 - 55) IgG Quantitative ELISA Kit (mouse/rat) *Colorimetric*	490 nm	8-500 ng/mL	100 pg	AS-54465

*For a full list of products and product citations, please refer to the product pages online. For related recombinant MOG proteins, refer to page 6.



Parkinson's Disease

Parkinson's disease (PD) is a progressive disorder affecting movements characterised by the involvement of certain enzyme activities and peptides/proteins. Parkinson's disease related molecules are attractive targets for new therapeutic development. ■



OUR PRODUCT SELECTION*

	ASSAY KITS	Abs/Em	LOWEST DETECTION LIMIT	CAT #
Synuclein	Sensolyte® Anti - α - Synuclein (Human) ELISA Kit *Colorimetric*	n.d.	5 pg/mL	AS-55550-H
	Sensolyte® Anti - α - Synuclein (Rat) ELISA Kit *Colorimetric*	n.d.	5 pg/mL	AS-55550-R
Transglutaminase	Sensolyte® Transglutaminase Activity Assay Kit, *Colorimetric*	n.d.	n.d.	AS-72244
	Sensolyte® Transglutaminase Activity Assay Kit, *Fluorimetric*	545/590 nm	120 ng/mL	AS-72245

*For a full list of products and product citations, please refer to the product pages online. For related recombinant synuclein & DJ-1 proteins, refer to page 6.



Bone-related Disease / Pathways

The relevance of alkaline phosphatases in relation to bone diseases such as Paget's disease continues to attract impactful research in the field. AnaSpec offers a variety of assay kits including highly purified chromogenic and fluorogenic substrates for the detection of alkaline phosphatase activities in solutions, in cell extracts, and in live cells; as well as in multiple formats... ■



OUR PRODUCT SELECTION*

	ASSAY KITS	Abs/Em	LOWEST DETECTION LIMIT	CAT #
Cathepsin K	Sensolyte® Rh110 Cathepsin K Assay Kit *Fluorimetric*	490/520 nm	0.1 ng/well	AS-72152
	Sensolyte® 520 Cathepsin K Assay Kit *Fluorimetric*	490/520 nm	1 ng/well	AS-72171
Aggrecanase 1	Sensolyte® 520 Aggrecanase-1 Assay Kit *Fluorimetric*	490/520 nm	0.1 ng	AS-72114
Phosphatases	Sensolyte® pNPP Alkaline Phosphatase Assay Kit *Colorimetric*	Abs = 405 nm	0.02 ng/well	AS-72146
	Sensolyte® pNPP Protein Phosphatase Assay Kit *Colorimetric*	Abs = 405 nm	10 ng of PTP 1B	AS-71105

*For a full list of products and product citations, please refer to the product pages online.



Cancer and Apoptosis

Detecting cell proliferation/viability and programmed cell death constitutes critical aspects of cancer and apoptosis research. Caspases involved in apoptosis act by executing cellular disassembly via proteolytic cleavage of substrates.

We are proud to offer convenient assay kits not only for detecting cell viability and proliferation but also a series of one-step homogeneous caspase assay kits and substrates ideal for HTS. ■



Cell Adhesion and ECM

Enzymes responsible for the breakdown of connective tissue are important in bone remodelling, tissue repair, cell signalling including migration (adhesion/ dispersion), differentiation, angiogenesis, apoptosis etc. Our vast array of MMP assay kits are designed to detect generic and specific MMP's activity including pro and active forms for your research needs. ■



OUR PRODUCT SELECTION*

	ASSAY KITS	Abs/Em	LOWEST DETECTION LIMIT	CAT #
Calpain	Sensolyte® 520 Calpain Activity Assay Kit *Fluorimetric*	490/520 nm	n.d.	AS-72149
Matriptase	Sensolyte® Rh110 Matriptase Activity Assay Kit *Fluorimetric*	496/520 nm	0.15 ng/mL	AS-72241
Caspases	Sensolyte® Caspase AFC Profiling Kit *Fluorimetric*	380/500 nm	n.a.	AS-71120
	Sensolyte® Homogeneous AMC Caspase-3/7 Assay Kit *Fluorimetric*	354/442 nm	n.d.	AS-71118
Cathepsins	Sensolyte® 520 Cathepsin D Assay Kit *Fluorimetric*	490/520 nm	n.d.	AS-72170
	Sensolyte® 520 Cathepsin E Assay Kit *Fluorimetric*	490/520 nm	2 ng/mL	AS-72222
Cell Viability and Proliferation	DHL™ Cell Viability and Proliferation Assay Kit *Fluorimetric*	560/590 nm	48 cells	AS-71300
Meprin	Sensolyte® 520 Meprin α activity Assay Kit *Fluorimetric*	490/520 nm	0,1 ng/mL	AS-72253

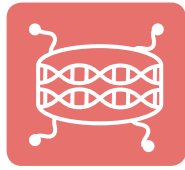
*For a full list of products and product citations, please refer to the product pages online.



OUR PRODUCT SELECTION*

	ASSAY KITS	Abs/Em	LOWEST DETECTION LIMIT	CAT #
MMPs	Sensolyte® 520 Generic MMP *Fluorimetric*	490/520 nm	1 ng	AS-71158
	Sensolyte® Generic MMP *Colorimetric*	Abs = 412 nm (with thiol reactive Ellman's reagent)	n.d.	AS-72095
	Sensolyte® 520 MMP Profiling Kit *Fluorimetric*	490/520 nm	n.a.	AS-71136
	Sensolyte® PLUS 520 MMP-1 *Fluorimetric*	490/520 nm	30 pg	AS-72012
	Sensolyte® 520 MMP-8 Assay Kit *Fluorimetric*	490/520 nm	n.d.	AS-71154

*For a full list of products and product citations, please refer to the product pages online. For related recombinant proteins and proenzyme MMPs, refer to page 6.

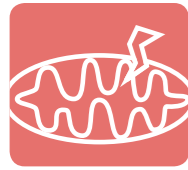


Epigenetics

To study gene expression modulation for example, the deacetylation of lysine residues on histone proteins, in relevance to transcriptional regulation in various models of cell cycling, apoptosis and differentiation, we offer a series of epigenetics enzymes assay kits, also in HTS formats. ■

OUR PRODUCT SELECTION*				
	ASSAY KITS	Abs/Em	LOWEST DETECTION LIMIT	CAT #
Sirtuins	Sensolyte® 520 FRET SIRT1 Assay Kit *Fluorimetric*	490/520 nm	n.d.	AS-72155
	Sensolyte® Green SIRT2 Assay Kit *Fluorimetric*	490/520 nm	n.d.	AS-72188
HDAC	Sensolyte® 520 HDAC Activity Assay Kit *Fluorimetric*	490/520 nm	0.78 µg/mL	AS-72084
HAT (p300)	Sensolyte® HAT (p300) Assay Kit *Fluorimetric*	289/513 nm	n.d.	AS-72172

*For a full list of products and product citations, please refer to the product pages online.
For related recombinant Sirtuin proteins, refer to page 6.



Oxidative Stress

Reactive Oxygen Species (ROS) have an important role in several biological events and are studied extensively via oxidative stress-related pathways and molecules.

In this context, we have developed highly sensitive assays for optimised detection of molecules such as hydrogen peroxide and glutathione, which have roles in ROS production/modulation. ■

OUR PRODUCT SELECTION*				
	ASSAY KITS	Abs/Em	LOWEST DETECTION LIMIT	CAT #
Thiol compounds	Sensolyte® 520 Thiol Quantitation Assay *Fluorimetric*	490/520 nm	0.04 µM with a linear range up to 160 µM	AS-72138
	Sensolyte® ABD-F Thiol Quantitation Assay *Fluorimetric*	389/513 nm	0.25 µM	AS-72137
Reduced Glutathione (GSH)	Sensolyte® 520 Total GSH Assay *Fluorimetric*	490/520 nm	0.2 µM with a linear range up to 100 µM	AS-72154
	Sensolyte® Total GSH Assay *Colorimetric*	Abs = 415 nm	1.5 µM with a linear range up to 100 µM	AS-72153
Hydrogen Peroxide	Sensolyte® ADHP Hydrogen Peroxide Assay Kit *Fluorimetric*	530-560/590 nm	1 µM (0.1 nmol) with a linear range up to 20 µM (2 nmol)	AS-71112
	Sensolyte® ADHP Peroxidase Assay Kit *Fluorimetric*	530-560/590 nm	n.d.	AS-71111

*For a full list of products and product citations, please refer to the product pages online.



Cardiovascular

Vascular diseases comprise disorders of the heart and blood vessels including hypertension and atherosclerosis. Detecting activities of Renin, Thrombin, Plasmin etc., are vital to understand their roles in vascular disease states. Our optimised/novel assay kits designed to detect enzyme activities can serve to advance your vascular disease research in convenient formats. ■

OUR PRODUCT SELECTION*				
	ASSAY KITS	Abs/Em	LOWEST DETECTION LIMIT	CAT #
Thrombin	Sensolyte® 520 Thrombin Assay Kit *Fluorimetric*	490/520 nm	0.6 ng/well	AS-72129
Plasmin	Sensolyte® Rh110 Plasmin Assay Kit *Fluorimetric*	496/520 nm	0.02 ng/well	AS-72125
Cathepsins	Sensolyte® 520 Cathepsin S *Fluorimetric*	490/520 nm	0.1 ng/well	AS-72099
Renin	Sensolyte® 520 Rat Renin *Fluorimetric*	490/520 nm	0.09 ng/well	AS-72140
	Sensolyte® 520 Renin *Fluorimetric*	490/520 nm	0.12 ng/well	AS-72040
Factor Xa	Sensolyte® 520 Factor Xa *Fluorimetric*	490/520 nm	-8 ng/well	AS-72208
ADAMTS-13	Sensolyte® 520 ADAMTS-13 Activity Assay Kit *Fluorimetric*	490/520 nm	n.d.	AS-72232
Angiotensin-converting enzyme 2	Sensolyte® 390 ACE2 Activity Assay Kit *Fluorimetric*	330/390 nm	n.d.	AS-72086
Urokinase (uPA)	Sensolyte® AFC Urokinase (uPA) Activity Assay Kit *Fluorimetric*	380/500 nm	n.d.	AS-72159
Tissue-type plasminogen activator (tPA)	Sensolyte® AMC tPA Activity Assay Kit *Fluorimetric*	354/442 nm	n.d.	AS-72160

*For a full list of products and product citations, please refer to the product pages online.
For related recombinant Renin proteins, refer to page 6.



Viral and Bacterial Proteases

To cater to microbial disease research keeping in mind the growing importance of High-Throughput Screening (HTS) for drug discovery, we proudly offer a series of fluorimetric Viral/Bacterial protease activity assay kits, which are optimised for HTS, as well as for regular non-HTS uses. ■

OUR PRODUCT SELECTION*				
	ASSAY KITS	Abs/Em	LOWEST DETECTION LIMIT	CAT #
HIV	Sensolyte® 520 HIV Assay Kit *Fluorimetric*	490 / 520 nm	n.d.	AS-71147
HCV	Sensolyte® 520 HCV Assay Kit *Fluorimetric*	490 / 520 nm	0.1 pmole	AS-71145
WNV	Sensolyte® 570 WNV Assay Kit *Fluorimetric*	540 / 575 nm	n.d.	AS-72080
Sortase	Sensolyte® 520 Sortase A Activity Assay Kit *Fluorimetric*	490/520nm	20 ng/mL	AS-72228
TEV	Sensolyte® 520 TEV Protease Assay Kit *Fluorimetric*	490/520	n.d.	AS-72227

*For a full list of products and product citations, please refer to the product pages online.
For related recombinant HCV, HIV, West Nile Viral & Bacterial Sortase proteases, refer to page 6.

ANNEXES

ID BUFFER COMPOSITION

ID Buffer composition

5x Sample Buffer:

	SDS-PAGE	Native PAGE	Final concentration (1x Buffer)
Tris base	300 mg	300 mg	50 mM
Glycerol	5.0 mL	5.0 mL	10 %
Bromophenol blue	25 mg	25 mg	0.01 %
2-mercaptoethanol	1.0 mL	1.0 mL	2 %
SDS	1.0 g		2 %
Deionized water	to 10 mL	to 10 mL	
pH (use 8M NaOH or 8M HCl)	6.8	6.8	

Store at room temperature - Note: Our 5x sample buffer (ID-WCSAB1-005) contains SDS and β -mercaptoethanol

1x protein sample solution:

Sample	x μ L
Sample Buffer 5x	2 μ L
Deionized water	to 10 μ L

Heat at 95°C for 10 min before loading on gel - Note: Our MOPS buffer (ID-WCRUB1-005) contains SDS

10x MOPS Running Buffer: to separate medium to large proteins >20 kDa

	SDS-PAGE	Native PAGE	Final concentration (1x Buffer)
Tris base	60.6 g	60.6 g	50 mM
MOPS	104.6 g	104.6 g	50 mM
EDTA	3.0 g	3.0 g	1 mM
SDS	10.0 g		0.1 %
Deionized water	to 1 L	to 1 L	
pH (do not adjust)	7.7	7.7	

Store at 4°C up to 6 months

10x MES Running Buffer: to separate small proteins (2-50 kDa)

	SDS-PAGE	Native PAGE	Final concentration (1x Buffer)
Tris base	60.6 g	60.6 g	50 mM
MES	97.6 g	97.6 g	50 mM
EDTA	3.0 g	3.0 g	1 mM
SDS	10.0 g		0.1 %
Deionized water	to 1L	to 1L	
pH (adjust with 8M NaOH or 8M HCl)	7.3	7.3	

Store at 4°C up to 6 months

20x Transfer Buffer:

	20x Transfer Buffer*
Tris base	60.6 g
Bicine	81.6 g
Deionized water	1L

To make 1L of 1x transfer buffer, mix 50 mL of 20x transfer buffer, 100 mL of methanol or ethanol and 850 mL of deionized water.

HOW TO ORDER

ONLINE

WWW.EUROGENTEC.COM

CATALOGUE PRODUCTS

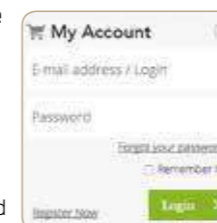
FAST AND SIMPLE

1. Register to or log in www.eurogentec.com
2. Select your product(s)
3. Fill in your cart
4. Finalise your order

More information: eos@eurogentec.com
00 800 666 00 123
(European toll free number)

FULL OF ADVANTAGES

1. Manage your profile
2. Fast order and favourite products
3. Request quotes



Discounted prices are automatically applied and tagged with a four-leaves clover on the related product web pages.

CUSTOM PRODUCTS

Contact us at info@eurogentec.com
to discuss your project.



RELATED PRODUCTS

Antibodies

- > Custom Polyclonals
- > Hybridomas development and *in vitro* production of custom monoclonals
- > Antibody fragments



Custom antibodies

Peptides

- > Custom and catalogue
- > Quantified peptides



Peptides

HiLyte™ Fluor Dyes

- Use of this product is covered by one or more of the following US patents owned by AnaSpec, Inc.: USP 7,465,810, USP 7,754,893, USP 7,820,783, USP 8,258,292, and divisionals, continuations, continuations-in-part, reissues, substitutes, and extensions thereof. The purchase of this product conveys to the buyer a limited, non-exclusive, nontransferable right (without the right to sell, repackage, or further sublicense) under these patent rights to use only the amount of product purchased for the purchaser's own internal research. No other license is granted to the buyer whether expressly, by implication, by estoppel or otherwise. In particular, the purchase of this product does not include nor carry any right or license to use, develop, or otherwise exploit this product commercially, and no rights are conveyed to the buyer to use the product or components of the product for any other purposes, including without limitation, provision of services to a third party, generation of commercial databases, or clinical diagnostics or therapeutics. This product is for research use only. For information on purchasing a license to this product for purposes other than research, contact licensing@eurogentec.com.

patents owned by AnaSpec, Inc.: USP 7,910,753, USP 8,093,411, and divisionals, continuations, continuations-in-part, reissues, substitutes, and extensions thereof. The purchase of this product conveys to the buyer a limited, non-exclusive, nontransferable right (without the right to sell, repackage, or further sublicense) under these patent rights to use only the amount of product purchased for the purchaser's own internal research. No other license is granted to the buyer whether expressly, by implication, by estoppel or otherwise. In particular, the purchase of this product does not include nor carry any right or license to use, develop, or otherwise exploit this product commercially, and no rights are conveyed to the buyer to use the product or components of the product for any other purposes, including without limitation, provision of services to a third party, generation of commercial databases, or clinical diagnostics or therapeutics. This product is for research use only. For information on purchasing a license to this product for purposes other than research, contact licensing@eurogentec.com.

SensoLyte® assays and assay kits

- Use of this product is covered by European Patent 1243658, US Patents 7,033,778 and 7,256,013 and their foreign counterparts, and licensed by CycLex Co. Ltd.

QXL® Quenchers

- Use of this product is covered by one or more of the following US

TRADEMARKS/LABELS

SensoLyte® is a registered trademark of AnaSpec
 AnaTag™ is a trademark of AnaSpec
 PUREfrex™ is a trademark of GeneFrontier Corp.
 HiLyte™ is a trademark of AnaSpec
 QXL® is a registered trademark of AnaSpec



Proteins

Contact:

For more information,
please contact your Sales
representative or contact us at:
isales@eurogentec.com

Kaneka Eurogentec S.A.

rue Bois Saint-Jean, 5
4102 Seraing
Belgium

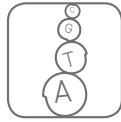
Toll free number: **00 800 666 00 123**

Eurogentec 2018

Follow us on



Life Science Research



Oligos



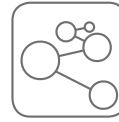
PCR/qPCR



Genes/DNA



Antibodies



Peptides



Proteins